

April is Earthquake Preparedness Month

Seismic Retrofit Guide

Store Hours - Monday thru Saturday 7 AM to 5 PM



\$23⁹⁹ each

Universal Retrofit Foundation Plate

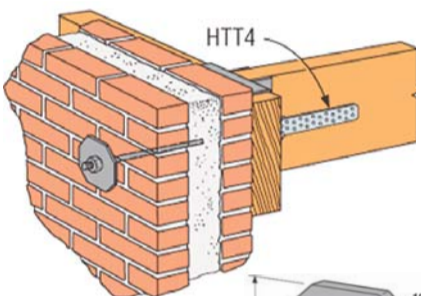
#URFP. (Anchors not included) Greatly reduce the risk of structural damage during an earthquake with our high-strength URFP universal retrofit foundation plate. Specifically designed for installation on raised foundations and in crawl spaces with limited vertical clearance, the URFP offers a one-for-one replacement for 5/8" anchor bolts.



\$20⁹⁹ each

Foundation Anchor Plate

#FRFP. Designed to connect the mudsill to the foundation and provide lateral load resistance. This flat retrofit foundation plate features a design that allows the designer to maintain prescriptive requirements. The FRFP can be used by filling the three round holes, or as an alternative, filling two optional triangle holes to allow designers increased loads and greater spacing.



\$13⁹⁹ each

Retro Plate 6"

#RP6. (Anchor Bolts not included) The RP6 retrofit plate fits on the outside of masonry buildings, and helps tie the walls to the roof or floor structure with a 3/4" diameter rod.



#SET3G10. 8.5oz.

\$27⁹⁹

#SET3G22. 22oz.

\$59⁹⁹

Set 3G Epoxy

The latest innovation in epoxy anchoring adhesives with high design strength and proven performance. A 1:1 ratio, two-component, anchoring adhesive for concrete (cracked and uncracked). Installs and performs in a variety of environmental conditions and temperature extremes.



#873124. 8.5oz.

\$21⁹⁹

#873126. 22oz.

\$39⁹⁹

Set-XP Epoxy

High-strength anchoring adhesive. A 1:1 ratio, two-component anchoring adhesive for anchoring and doweling into concrete (cracked and uncracked) and masonry (uncracked) applications.

\$3⁹⁹

Epoxy Nozzle

#873120. An 18-element mixing nozzle for use with 22 oz. and 56 oz. epoxy adhesive cartridges. This is a one-piece nozzle with integrated nut (separate retaining nut not required). Once the epoxy hardens in the nozzle it can be used as a cap to keep the product fresh.



#RFB4X7. 1/2"x7" \$2⁹⁹

#RFB5X8. 5/8"x8" \$3⁹⁹

Retro Fit Bolt

Retrofit Bolts are pre-cut threaded rod, supplied with nut and washer. For use with Simpson Strong-Tie adhesives. Use with Simpson Strong-Tie adhesives to anchor into existing concrete and masonry. Offers a complete engineered anchoring system when used with Simpson Strong-Tie anchoring adhesives. Each end of the threaded rod is stamped with rod length in Inch and our "No-Equal" symbol for easy identification after installation.

2 Pack

#625HMG2P 5/8"x5" \$10⁹⁹

#626HMG2P 5/8"x6" \$13⁹⁹

#628HMG2P 5/8"x8" \$18⁹⁹

10 Pack

#625HMG 5/8"x5" \$57⁹⁹

#626HMG 5/8"x6" \$67⁹⁹

#628HMG 5/8"x8" \$92⁹⁹

5 Pack

#505HMG5P 1/2"x5" \$19⁶⁷

#506HMG5P 1/2"x6" \$19⁹⁹

#508HMG5P 1/2"x8" \$37⁹⁹

20 Pack

#505HMG 1/2"x5" \$76⁹⁹

#506HMG 1/2"x6" \$72⁹⁹

#508HMG 1/2"x8" \$146⁹⁹



Titen Heavy Duty Galvanized Anchor

A high-strength screw anchor for concrete and masonry. It is designed for optimum performance in both cracked and uncracked concrete. The self undercutting, non-expansion characteristics make it ideal for structural applications, even at reduced edge distances and spacings. Recommended for permanent dry, interior non-corrosive environments.



\$79⁹⁹

Epoxy Gun

#873119. Features a steel carriage and is engineered for high-volume, continuous use. The tool can be easily converted (conversion parts included) from dispensing a 22 oz. 1:1 ratio cartridge to a 16.5 oz. 2:1 ratio cartridge.

\$8⁹⁹

Anchor Blow Out Bulb

#T1854. The BOSCH rubber blow-out bulb is designed to clean holes before setting anchors. Long nozzle extends from the rubber bulb.

\$7⁹⁹

13" Extension Blow Gun Nozzle

#0818112. Clean holes before setting anchors with this extended reach blow gun nozzle.



#ETB4. 8"x1/2" \$4⁹⁹

#ETB6. 16"x3/4" \$5⁵⁰

#ETB48. 16"x1" \$6⁵⁰

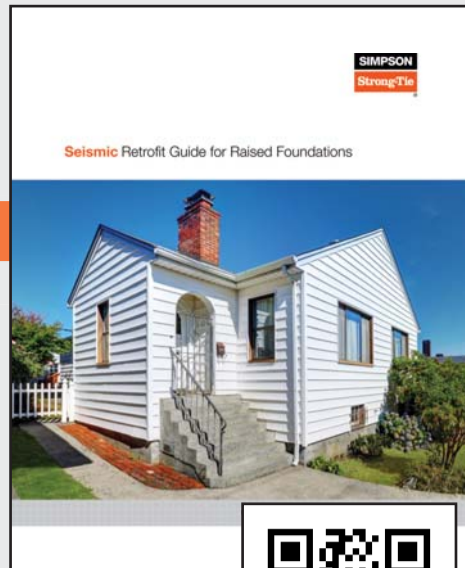
Nylon Brush

Brushes are used for cleaning drilled holes prior to adhesive anchor installation. Brushes have a twisted wire handle with nylon bristles.



4" Extension Blow Gun Nozzle

#7732878. Meets OSHA regulation 100-1 for 30 psi "dead head" pressure. Features vented nozzle to relieve the compressed air should the nozzle become plugged or accidentally obstructed. Heavy-duty die-cast body with hang-up hook, 1/4 in NPT female inlet and 4 in extension.



Seismic Retrofit Guide for Raised Foundations



Download FREE Seismic Retrofit Guide for Raised Foundations

www.meadclark.com/ps-hardware.html

Simpson Strong-Tie's Seismic Retrofit Guide for Raised Foundations (F-SEISRETRGD19) helps educate homeowners about how earthquakes affect a home and the steps to take to reinforce the structural frame of a house. With this guide and the right tools, do-it-yourselfers can increase the structural integrity of their house, making it stronger and safer. For those not inclined to tackle this type of project, the guide can help you make sure your retrofit is done right.

As we've seen in major earthquakes, some homes hold up better than others. Why is that? A major factor is when they were built. Older homes — and particularly those built on raised foundations — are especially susceptible to earthquake damage. Those constructed more recently have been built to stricter standards. So if you're in a home older than 1985 and on a raised foundation, what do you do?

This Seismic Retrofit Guide is designed to help you identify whether your home is especially at risk in a seismic event, how retrofitting can strengthen an older home's structural frame, and what solutions are recommended to strengthen and protect your home. The Simpson Strong-Tie® product solutions listed in this guide meet the prescriptive minimum standards of the 2018 International Existing Building Code (IEBC) and are intended to improve the ability of structures to withstand seismic forces. These guidelines will not prevent earthquake damage, and apply only to homes with crawl spaces and cripple walls. For conditions other than those shown, or for a complete evaluation of a building or home, a licensed structural engineer or other qualified design professional should be consulted.

Before starting any retrofit or repair, check with your local building department for requirements in your area, which may include stricter standards than those shown in this guide. The information in the Seismic Retrofit Guide is intended to demonstrate how Simpson Strong-Tie products should be installed.



The right information. The right materials. The right lumberyardsm

Hearn Ave. & Dowd Dr. ★ Santa Rosa ★ 707-576-3333 ★ www.meadclark.com ★ Monday thru Saturday 7 AM to 5 PM

Visa, Discover, Mastercard & American Express Welcomed ★ All items FOB yard and store - limited to stock on hand ★ Prices may vary after May 21, 2022
We reserve the right to correct printed errors ★ Photographs represent merchandise offered, but may not be exactly as shown ★ ad design ©2022 AdverGraphics